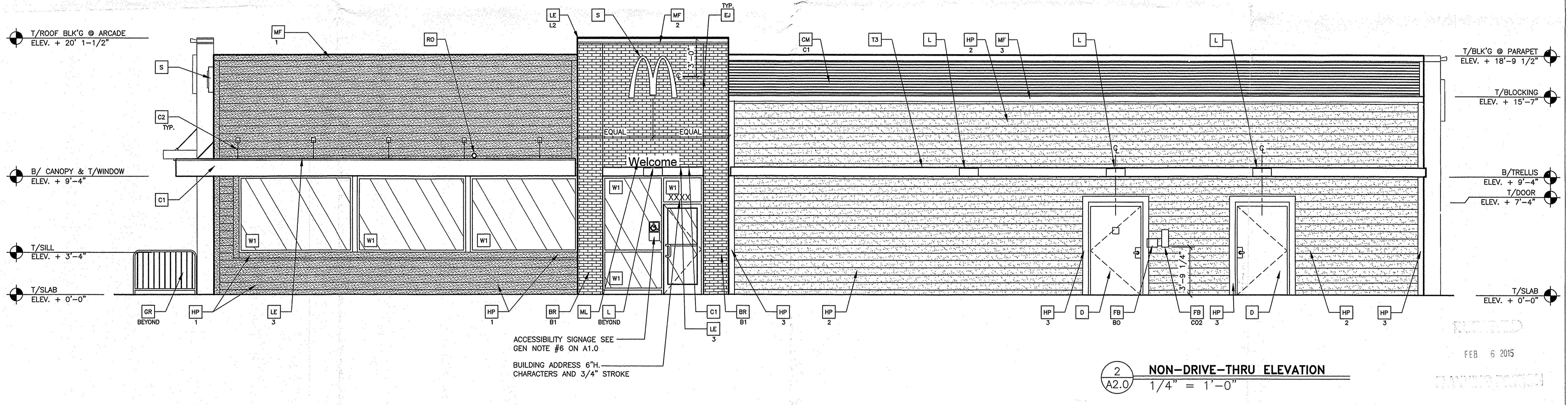


1 FRONT ELEVATION
1/4" = 1'-0"



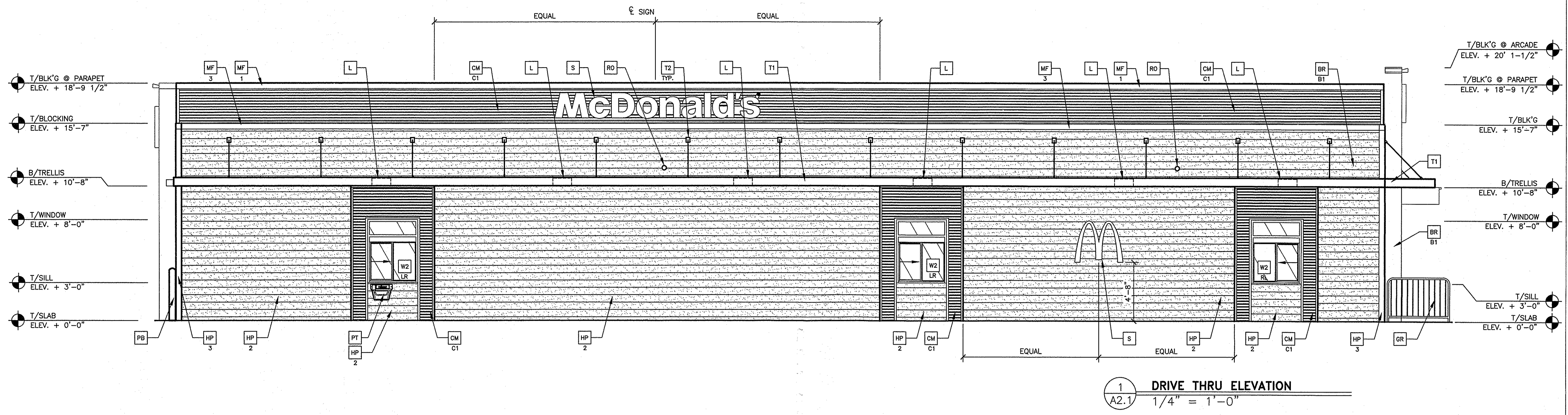
2 NON-DRIVE-THRU ELEVATION
1/4" = 1'-0"

KEY NOTES:

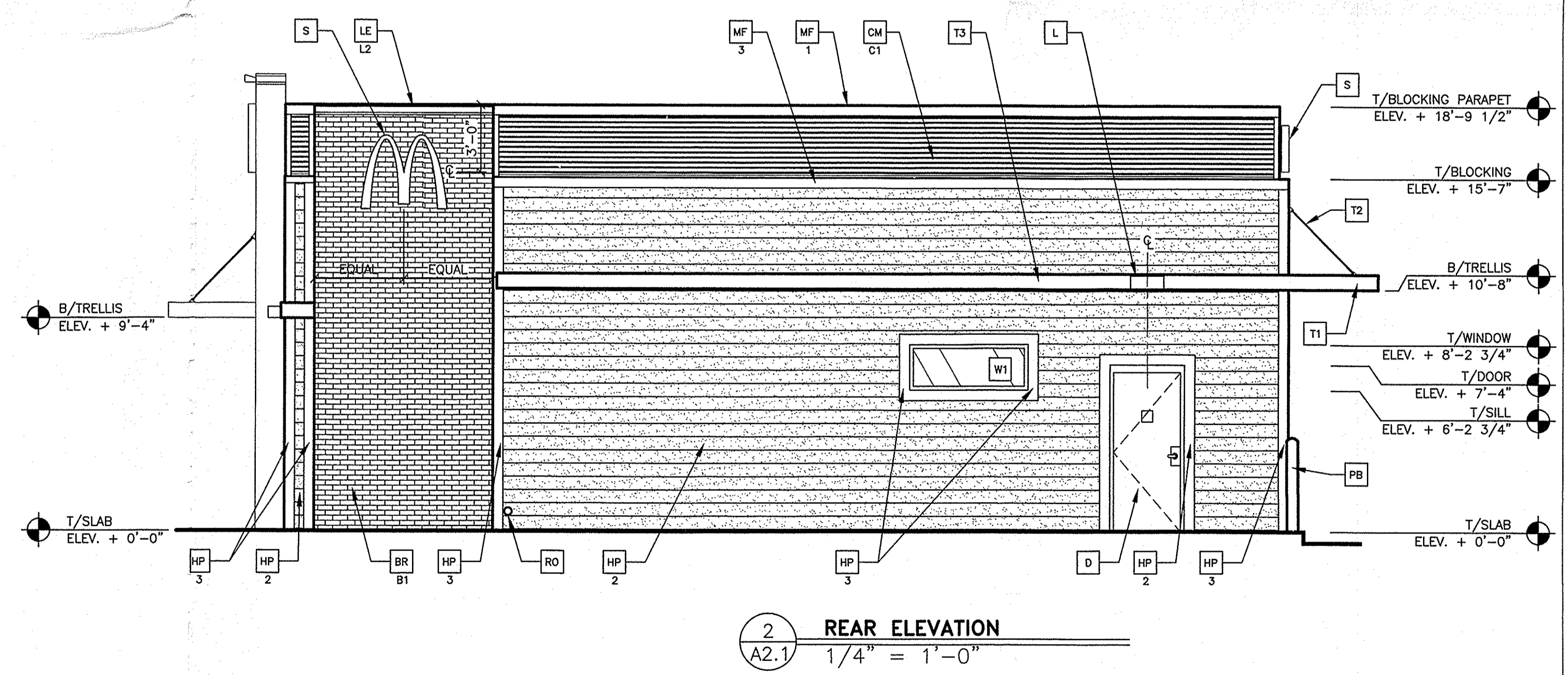
- BR FACEBRICK
- B1-COLOR:
B1 = ALASKA WHITE SMOOTH BY BELDEN OR EQUAL
- C1 ALUMINUM CANOPY SYSTEM (COLOR: GOLD)
- C2 ALUMINUM CANOPY TIE-BACK SYSTEM
- CM CORRUGATED METAL PANEL - SEE 18/A5.0
- C1-COLOR:
C1 = "CITYSCAPE" BY METAL-ERA
- D HOLLOW METAL DOOR - PAINT TO MATCH COLOR OF SURROUNDING MATERIAL
- E EXTERIOR INSULATION FINISH SYSTEM (E.I.F.S.)
COLOR = BENJAMIN MOORE 2122-70 SNOW WHITE
- EJ EXPANSION JOINT
- FB CO2 = BULK CO2 FILL BOX (EQPM SCHEDULE ITEM 49.00)
- BO = BULK OIL FILL BOX (EQPM SCHEDULE ITEM 700.18) - CONFIRM USE WITH MCD PROJECT MANAGER
- GR GUARD RAIL -SEE SITE PLAN FOR EXACT LOCATION AND LENGTH
- HP HARDIEPLANK SIDING
1-COLOR: 1 = IRON GRAY
2 = CHESTNUT BROWN
3 = HUNTINGTON BEIGE
- L LIGHT FIXTURE (WALL SCONCE) - SEE ELECTRICAL
- LE ACCENT LIGHTING - SEE ELECTRICAL
- LT-LED LIGHT:
L1 = UP AND DOWN FIXTURE
L2 = DOWN ONLY FIXTURE
L3 = INTEGRAL CANOPY FIXTURE
L4 = UP ONLY FIXTURE
- ML METAL LETTERING - BY OTHERS
- MF METAL FASCIA - COLOR TO MATCH CORRUGATED METAL PANEL - SEE 1/A5.0
- 1-TYPE:
1 = PRE-FAB ANCHOR-TITE FASCIA
2 = PRE-FAB CUSTOM ARCADE FASCIA
3 = PRE-FAB MASONRY CAP FASCIA
- PB PIPE BOLLARD - PAINTED YELLOW
- PT (RMHC) COIN COLLECTOR
UNIT #BWP DT2000 STD
CALL 1-888-743-7435 TO ORDER
- RO ROOF DRAIN OVERFLOW PIPE PAINT TO MATCH SURROUNDING MATERIAL
- T1 ALUMINUM TRELLIS SYSTEM
- T2 TRELLIS TIE-BACK SYSTEM
- T3 ALUMINUM TRELLIS 2" x 8" WALL FASCIA SYSTEM - REFER TO SIM. DETAIL 3 ON SHEET A5.1
- S McDONALD'S SIGNAGE BY OTHERS - UNDER SEPARATE PERMIT.
- W1 EXTERIOR WINDOW ASSEMBLY - TEMPERED GLASS - SEE ASSEMBLY NOTES
- W2 DRIVE-THRU WINDOW BY READY ACCESS 600 SERIES, 36" SERVICE HEIGHT WITH TRANSOM - MANUAL OPEN; ELECTRONIC RELEASE
- XX SLIDE DIRECTION: RL = RIGHT TO LEFT
LR = LEFT TO RIGHT

		REV	DATE	DESCRIPTION	BY
	<p>PREPARED BY: McDonald's USA, LLC</p> <p>© 2012 McDonald's Corporation</p> <p><small>These drawings and specifications are the confidential and proprietary property of McDonald's USA, LLC and shall not be copied or reproduced without written authorization. The contract documents were prepared not suitable for use on a different site or at a later time. Use of these drawings for reference or example on another project requires the services of a properly licensed architect and engineer. Reproduction of the contract documents for use on another project is not authorized.</small></p>		<p>DRAWN BY: JPM</p> <p>STD ISSUE DATE: JUNE 2014</p> <p>REVIEWED BY: SPM: PP</p> <p>DATE ISSUED: 06/24/2014</p> <p>C.S. PROJECT #: MCD-17024</p>		
	<p>PROJECT: PROPOSED MCDONALD'S RESTAURANT</p>		<p>DESCRIPTION: WOOD BEARING WALLS W/ CLAPBOARD SIDING EXTERIOR FINISH WOOD ROOF TRELLIS FRAMING 4" BRICK EXTERIOR FINISH ARCADE/ENTRY SITE ID: 031-2742 NYS REG. 112 & PINE RD., N. CORHAM, BROOKHAVEN NY</p>		
	<p>SHEET NO. A2.0 ELEVATIONS</p>		<p>DATE: FEB 6 2014 PLANNING DIVISION</p> <p>RECEIVED</p>		
	<p>PROJECT ADDRESS: 031-2742</p>		<p>PROJECT NO. 031-2742</p>		

K:\STD\STANDARD\PRELIM\2011 STANDARD BUILDINGS - APRIL 2012 RELEASE\4587-WW-FULL-SET\DWG\A-ELEV\DWG 04-26-2012 14:40



1 DRIVE THRU ELEVATION
1/4" = 1'-0"



2 REAR ELEVATION
1/4" = 1'-0"

KEY NOTES:

- BR FACEBRICK
B1-COLOR:
B1 = ALASKA WHITE SMOOTH BY BELDEN OR EQUAL
- C1 ALUMINUM CANOPY SYSTEM (COLOR: GOLD)
- C2 ALUMINUM CANOPY TIE-BACK SYSTEM
- CM CORRUGATED METAL PANEL - SEE 1B/A5.0
C1-COLOR:
C1 = "CITYSCAPE" BY METAL-ERA
- D HOLLOW METAL DOOR - PAINT TO MATCH COLOR OF SURROUNDING MATERIAL
- E EXTERIOR INSULATION FINISH SYSTEM (E.I.F.S.)
COLOR = BENJAMIN MOORE 2122-70 SNOW WHITE
- EJ EXPANSION JOINT
- PB
- C02 - C02 = BULK C02 FILL BOX (EQPM SCHEDULE ITEM 49.00)
B0 = BULK OIL FILL BOX (EQPM SCHEDULE ITEM 700.18) - CONFIRM USE WITH MCD PROJECT MANAGER
- GR GUARD RAIL - SEE SITE PLAN FOR EXACT LOCATION AND LENGTH
- HP HARDIEPLANK SIDING
1-COLOR: 1 = IRON GRAY
2 = CHESTNUT BROWN
3 = HUNTINGTON BEIGE
- L LIGHT FIXTURE (WALL SCONCE) - SEE ELECTRICAL
- LE ACCENT LIGHTING - SEE ELECTRICAL
L1-LED LIGHT:
L1 = UP AND DOWN FIXTURE
L2 = DOWN ONLY FIXTURE
L3 = INTEGRAL CANOPY FIXTURE
L4 = UP ONLY FIXTURE
- ML METAL LETTERING - BY OTHERS
- MF METAL FASCIA - COLOR TO MATCH CORRUGATED METAL PANEL - SEE 1/A5.0
1-TYPE:
1 = PRE-FAB ANCHOR-TITE FASCIA
2 = PRE-FAB CUSTOM ARCADE FASCIA
3 = PRE-FAB MASONRY CAP FASCIA
- PB PIPE BOLLARD - PAINTED YELLOW
- PT (RMHC) COIN COLLECTOR
UNIT #WPT DT2000 STD
CALL 1-888-743-7435 TO ORDER
- RO ROOF DRAIN OVERFLOW PIPE PAINT TO MATCH SURROUNDING MATERIAL
- T1 ALUMINUM TRELLIS SYSTEM
- T2 TRELLIS TIE-BACK SYSTEM
- T3 ALUMINUM TRELLIS 2" x 8" WALL FASCIA SYSTEM - REFER TO SIM. DETAIL 3 ON SHEET A5-1
- S McDONALD'S SIGNAGE BY OTHERS - UNDER SEPARATE PERMIT.
- W1 EXTERIOR WINDOW ASSEMBLY - TEMPERED GLASS - SEE ASSEMBLY NOTES
- W2 DRIVE-THRU WINDOW BY READY ACCESS 600 SERIES, 36" SERVICE HEIGHT WITH TRANSOM - MANUAL OPEN, ELECTRONIC RELEASE
XX SLIDE DIRECTION: RL = RIGHT TO LEFT
LR = LEFT TO RIGHT

PREPARED BY: **CORE STATES GROUP**
 20 South Main Avenue
 Phone (313) 697-9125
 Fax (313) 697-0124
 CoreStates.com

REGISTERED ARCHITECT
 KENNETH J. WICK
 STATE OF MICHIGAN

DATE: _____
 REV: _____
 DESCRIPTION: _____
 BY: _____

PREPARED FOR: **McDonald's USA, LLC**
 These drawings and specifications are the confidential and proprietary property of McDonald's USA, LLC and shall not be copied or reproduced without written authorization. The contract documents were prepared specifically for use on a different site or at a later time. Use of these drawings for reference or example on another project requires the services of properly licensed architects and engineers. Reproduction of the contract documents for use on another project is not authorized.

DRAWN BY: JPM
 STD ISSUE DATE: JUNE 2014
 REVIEWED BY: SPM: PP
 DATE ISSUED: 06/24/2014
 C.S.C. PROJECT #: MCD-17024

TITLE: **PROPOSED MCDONALD'S RESTAURANT**
 DESCRIPTION: WOOD BEARING WALLS W/ CLAPBOARD SIDING EXTERIOR FINISH WOOD ROOF TRUSS FRAMING
 4" BRICK EXTERIOR FINISH ARCADE/ENTRY
 SITE ADDRESS: 031-2742
 031-2742
 JMS RIE 112 & PINE RD, N. CORAM, BROOKHAVEN NY

SHEET NO. **A2.1**
 ELEVATIONS